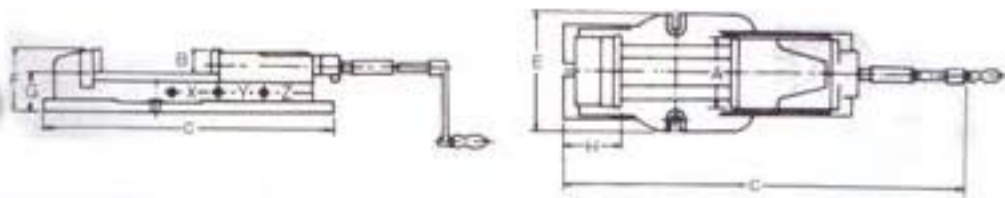


Hydraulic Machine Vise



www.acesoriosmaquinas.com.br

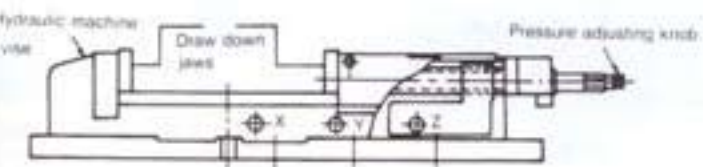
Order No. & Dimensions

ORDER NO.	A	B	C	D	E	F	G	H	Max. Clamp Force	G.W.(kg)	Meas CFT	CODE NO.
VH-4	105	36	525	440	170	95	58	110	2500kgs	(C)27	0.8	1002-001
VH-5	130	48	690	545	200	120	70.5	125	4500kgs	(C)46	1.5	1002-002
VH-6	150	53	800	620	225	135	82.5	135	4500kgs	(C)63	2.2	1002-003
VH-8	200	62	890	678	283	162	100	170	7500kgs	(W)110	3.6	1002-004

Unit:mm

- Ruggedly constructed for milling, drilling,shaping,grinding and many other machine shop applications.
- Body is made of high quality ductile cast iron,resists deflection or bending.
- Sliding bed ways flame hardened and ground.
- Concealed spindle for protection against chips and dirt.
- Hydra-booster system for maximum clamping pressure with minimum force.
- Quick of clamping & locking and easy of operation.
- Accurance within 0.02mm.
- Furnished with or without swivel base.
- Hydra-booster system is guaranteed for using 2 years limited.
- The hydraulic oil number is 68#.

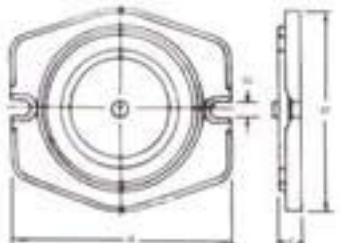
CLAMPING CAPACITY (3 STEPS CLAMPING POSITION FIG)



CLAMPING CAPACITY Unit:mm

ORDER NO.	X	Y	Z
VH-4, VHT-4	0-60	57-115	110-170
VH-5	0-80	78-115	140-208
VH-6, VHT-6	0-100	98-200	195-300
VH-8	0-100	98-200	195-300

Swivel base



Unit:mm

ORDER NO.	a	b	c	d	G.W. (kg)	CODE NO.
HS-4	280	210	28	16	4	1002-010
HS-5	297	267	33	16	7	1002-011
HS-6	335	310	36	19	10	1002-012
HS-8	373	355	41	19	16	1002-013