



Simple Type Tool Setting Stand

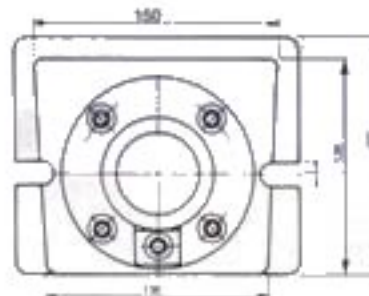
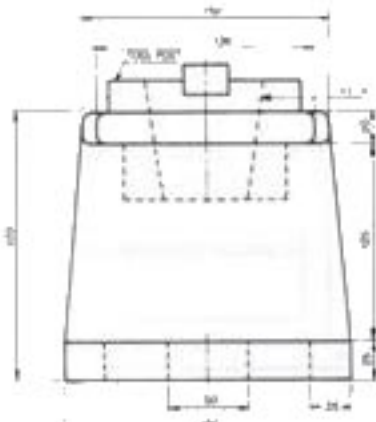


- This tool setting stand is one kind of subsidize tool for helping machine center to work efficiently.

To be used fixing the tools on tool holder. It could avoid the method of using draw bar to fix (on machine center). It is safe, and doesn't effect the precision of machine's spindle.

- It is simple structive type.

And could fix tooling on the above and hold the pull studs on the below of it. This is the excellent helping tools for simple, rapid and safe.



ORDER NO.	SHANK TAPERS	STD	WEIGHT	CODE NO.
VTS-BT-30	30	BT	13kg	3405-010
VTS-BT-40	40	ISO	13kg	3405-011
VTS-BT-50	50	NT	12kg	3405-012
VTS-SK-30	30	DIN 69871A	13kg	3405-013
VTS-SK-40	40		13kg	3405-014
VTS-SK-50	50		12kg	3405-015

